



Doc. Title
SyncTrak_v5 User Guide

Rev.
1.02

page of pages
1 of 16


SyncTrak_v5 User Guide

User Guide

Suntech International Ltd.

Table of Contents

1. Introduction	3
2. Install SyncTrak_V5	3
3. Configuration tool	6
3-1. Connect to Device	6
3-2. Change parameters	7
3-3. Circular Geo-fence Setting	8
3-3-1. Add Circular Geo-fence	8
3-3-2. Edit Circular Geo-fence	10
3-4. Polygon Geo-fence Setting	11
3-4-1. Add Polygon Geo-fence	11
3-4-2. Edit Polygon Geo-fence	13
3-5. Profile	14
REVISIONS	16

 <p>Suntech Suntech International Ltd.</p>	<p>Doc. Title SyncTrak_v5 User Guide</p>	<p>Rev. 1.02</p>	<p>page of pages 3 of 16</p>
---	--	----------------------	----------------------------------

1. INTRODUCTION

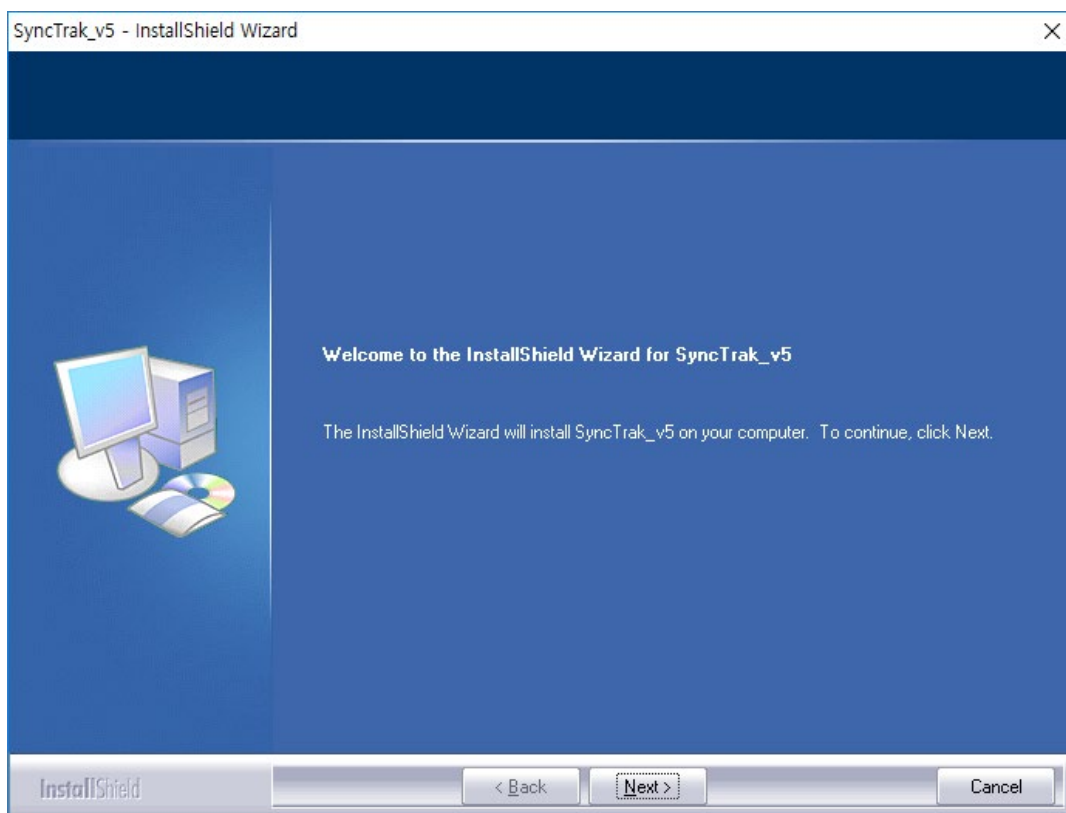
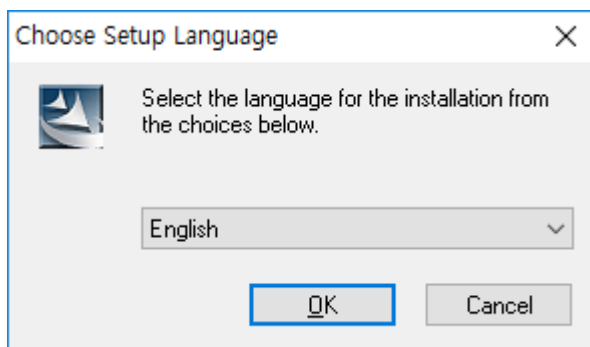
Using SyncTrak_V5 you can change parameters and download firmware of ST devices easily. It can be connected to all of Suntech Products, ST300 and ST940 series.

2. INSTALL SYNCTRAK_V5

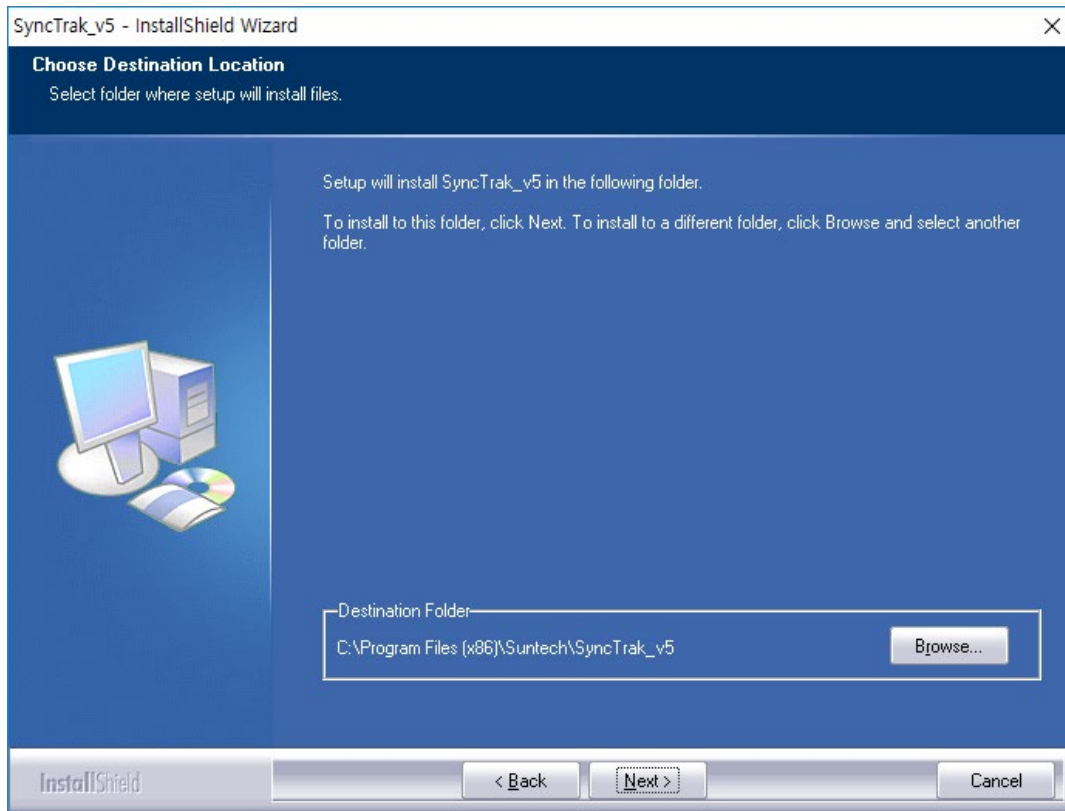
Execute SyncTrak_v5.exe

If you are using Windows Vista or 7 or 10, you have to execute it in Administrator mode.

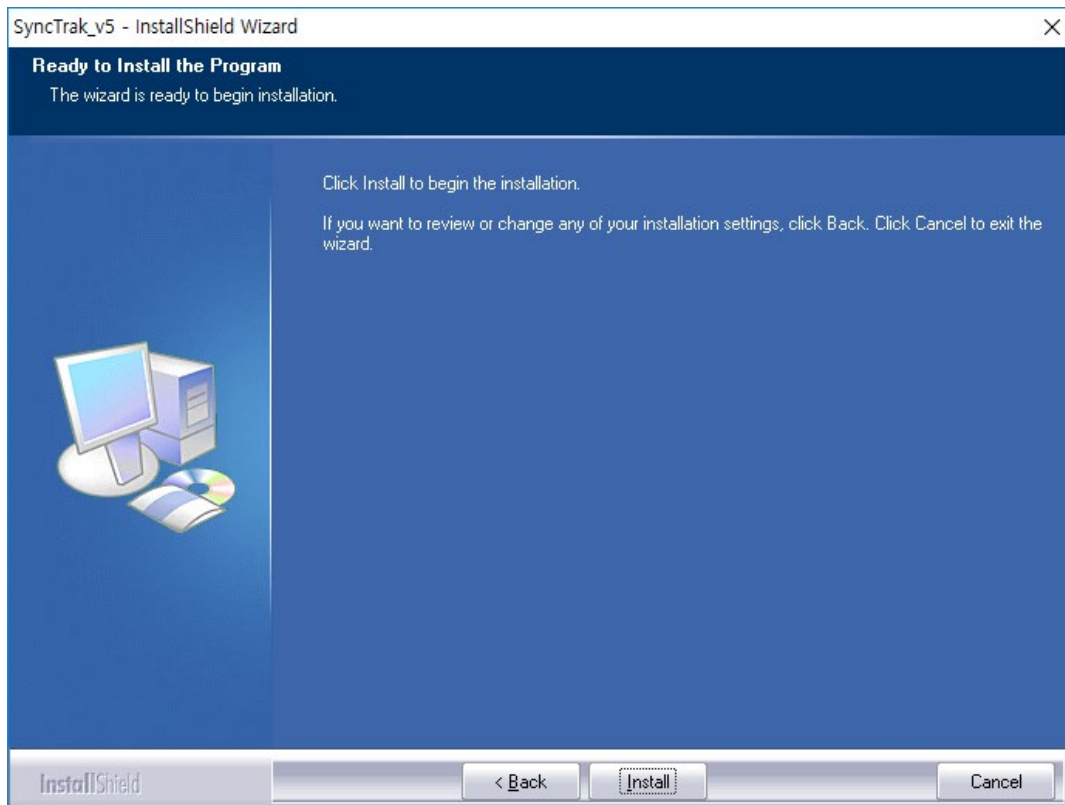
Select a language. We supported English and Portuguese (Brazilian).

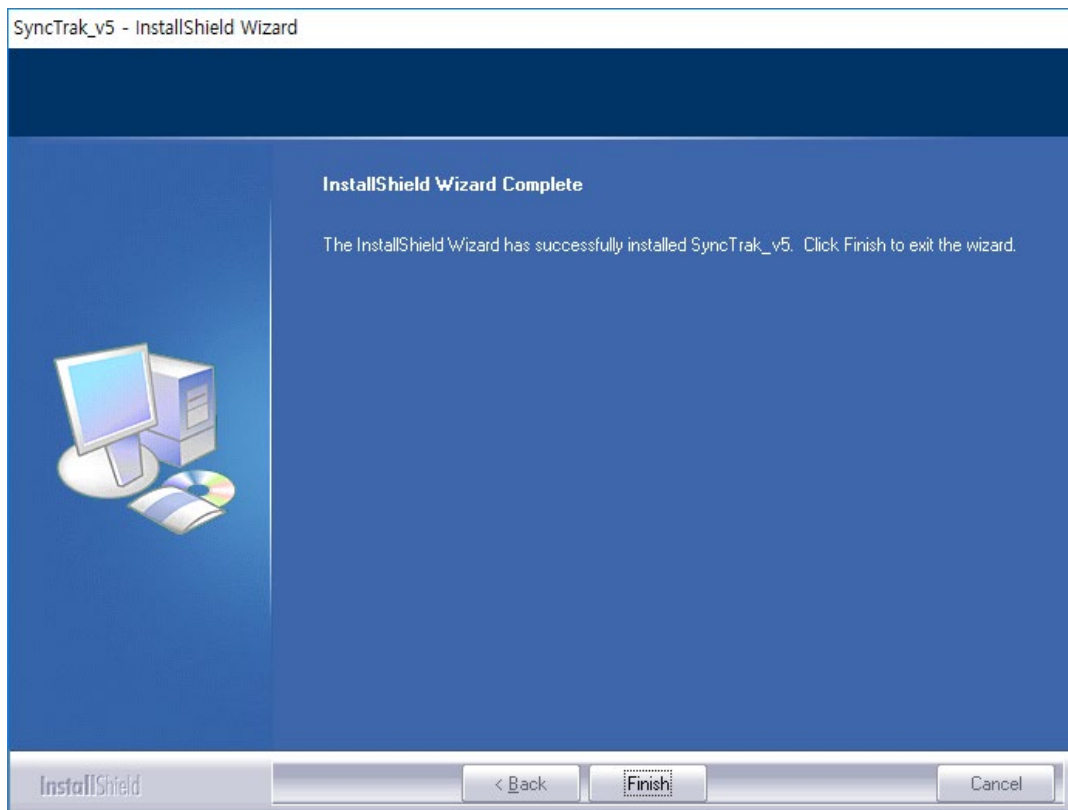
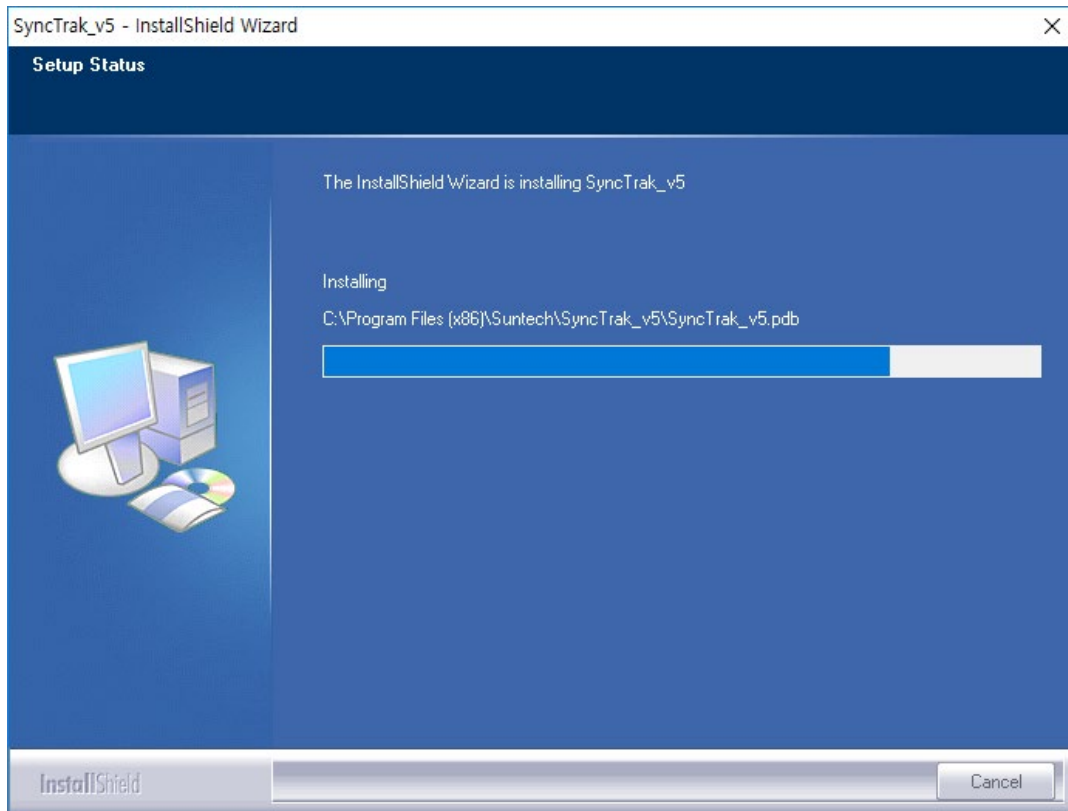


Select folder where SyncTrak will installed.



Click Install



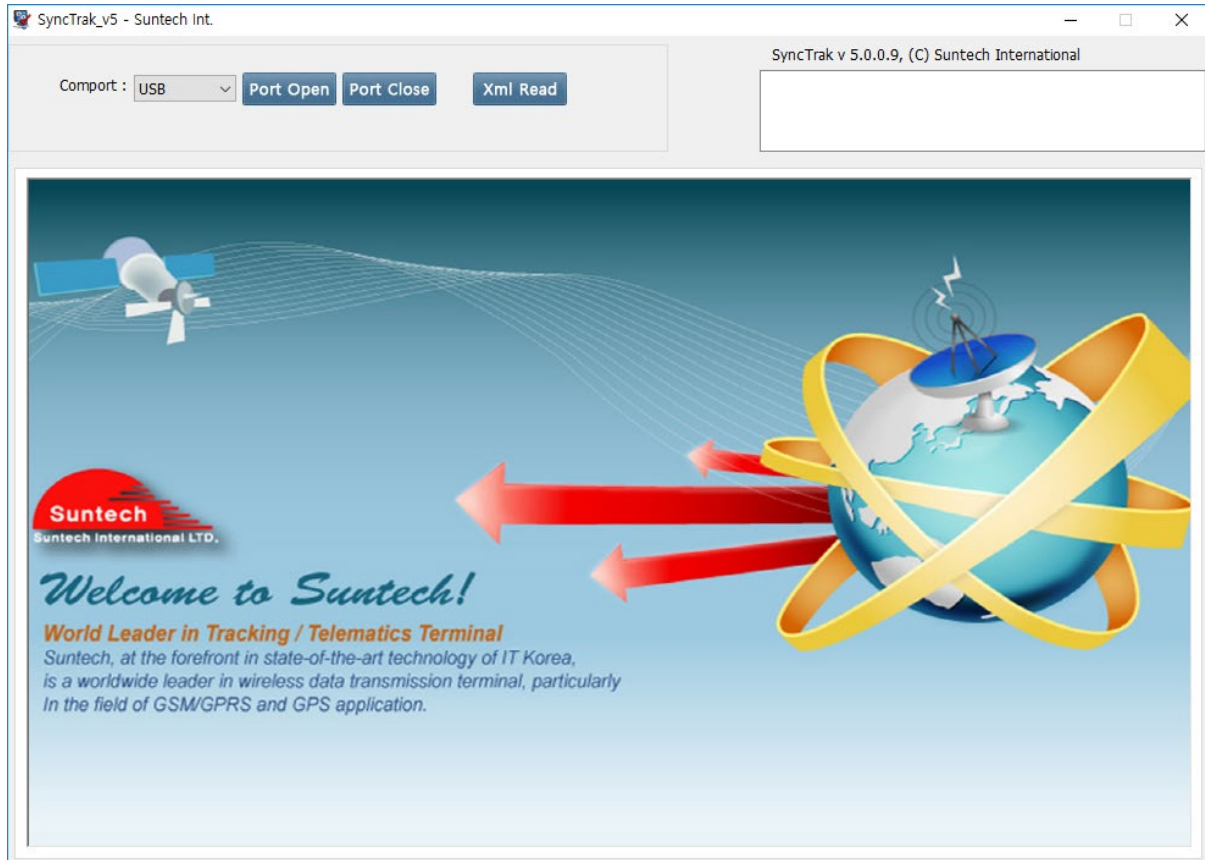


3. CONFIGURATION TOOL

3-1. Connect to Device

Shortcut of SyncTrak_V5 is installed in the desktop.

You can execute it in Start Menu. Start → Programs → Suntech → SyncTrak_V5

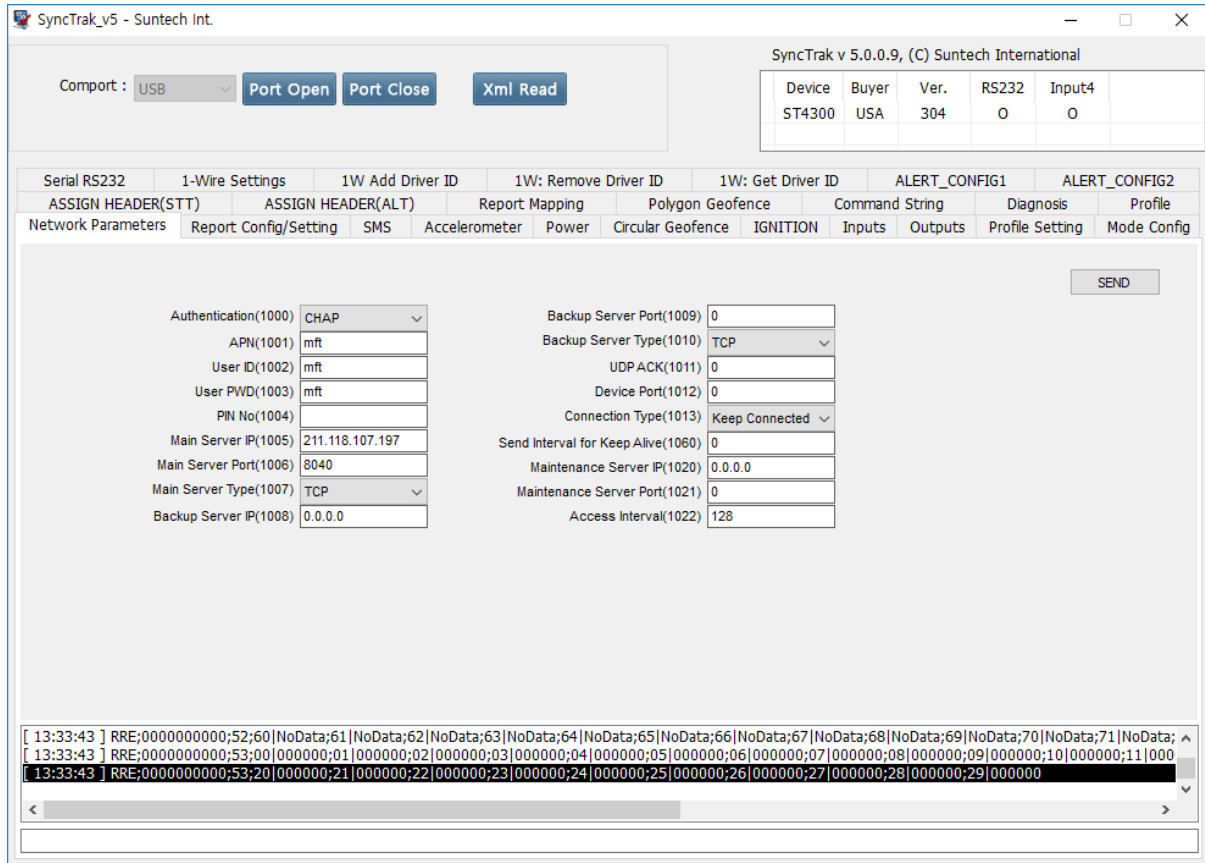


Turn on the device and select COM port that is connected to the device and click **Port Open** button. When device is connected to SyncTrak_V5, version of device is displayed.

3-2. Change parameters

If you have to change some parameters, change parameters as you want and click **SEND** button.

Setting command and result are displayed in the box at the bottom of menu.



The screenshot shows the SyncTrak v5 software interface. At the top, there are buttons for 'Port Open', 'Port Close', and 'Xml Read'. A table displays device information: Device (ST4300), Buyer (USA), Ver. (304), RS232 (0), and Input4 (0). Below this is a menu with various settings categories like 'Serial RS232', '1-Wire Settings', 'Report Mapping', etc. The main area contains two columns of parameter settings, each with a text input field and a dropdown menu. A 'SEND' button is located to the right of these settings. At the bottom, a log window shows a series of hexadecimal data strings.

Device	Buyer	Ver.	RS232	Input4
ST4300	USA	304	0	0

Serial RS232	1-Wire Settings	1W Add Driver ID	1W: Remove Driver ID	1W: Get Driver ID	ALERT_CONFIG1	ALERT_CONFIG2
ASSIGN HEADER(STT)	ASSIGN HEADER(ALT)	Report Mapping	Polygon Geofence	Command String	Diagnosis	Profile
Network Parameters	Report Config/Setting	SMS	Accelerometer	Power	Circular Geofence	IGNITION
					Inputs	Outputs
					Profile Setting	Mode Config

Authentication(1000)	CHAP	Backup Server Port(1009)	0
APN(1001)	mft	Backup Server Type(1010)	TCP
User ID(1002)	mft	UDP ACK(1011)	0
User PWD(1003)	mft	Device Port(1012)	0
PIN No(1004)		Connection Type(1013)	Keep Connected
Main Server IP(1005)	211.118.107.197	Send Interval for Keep Alive(1060)	0
Main Server Port(1006)	8040	Maintenance Server IP(1020)	0.0.0.0
Main Server Type(1007)	TCP	Maintenance Server Port(1021)	0
Backup Server IP(1008)	0.0.0.0	Access Interval(1022)	128

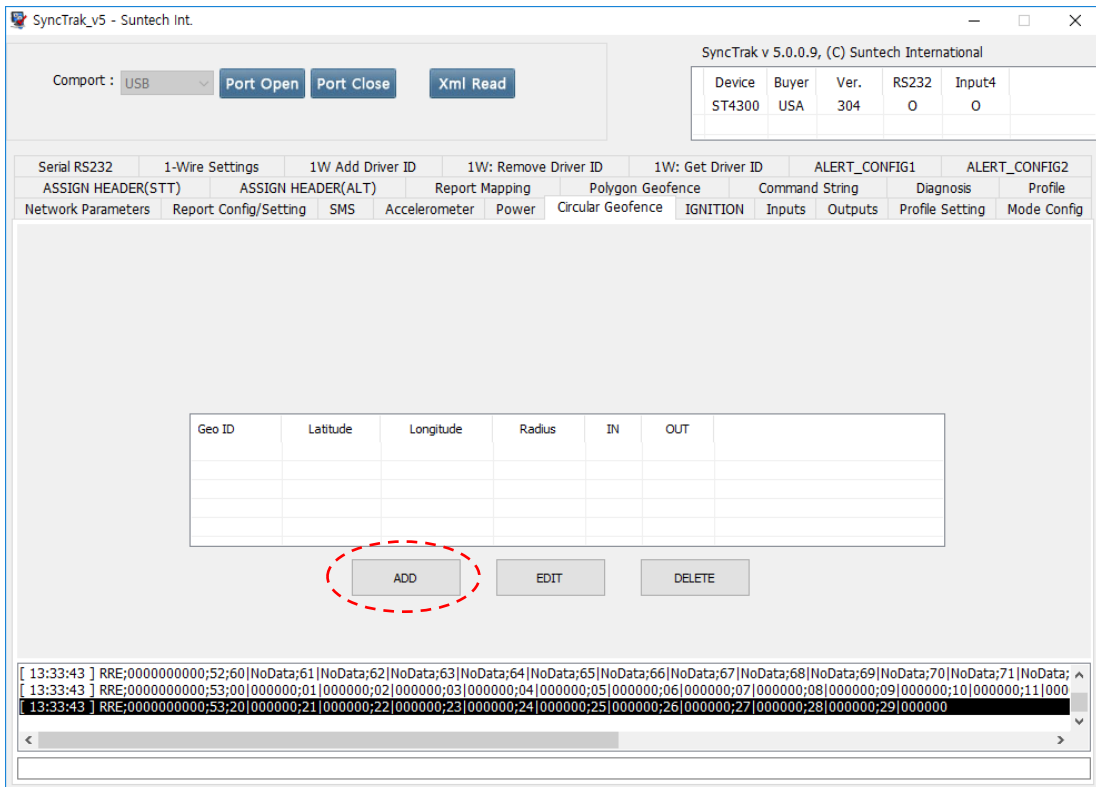
```

[ 13:33:43 ] RRE;0000000000;52;60|NoData;61|NoData;62|NoData;63|NoData;64|NoData;65|NoData;66|NoData;67|NoData;68|NoData;69|NoData;70|NoData;71|NoData; ^
[ 13:33:43 ] RRE;0000000000;53;00|000000;01|000000;02|000000;03|000000;04|000000;05|000000;06|000000;07|000000;08|000000;09|000000;10|000000;11|0000
[ 13:33:43 ] RRE;0000000000;53;20|000000;21|000000;22|000000;23|000000;24|000000;25|000000;26|000000;27|000000;28|000000;29|000000
  
```

3-3. Circular Geo-fence Setting

3-3-1. Add Circular Geo-fence

If you would like to add new circular geo-fence, you should use Add Circular Geo-Fence function.(Click ADD button)



This function has two steps. First step is set geofence ID and IN, OUT options. After set parameters and clicked NEXT button, you can see the second step, set coordinate and radius dialog. If you set all of parameters and click SEND button, you can set to complete to add new circular geo-fence.

Geofence Dialog

Geo ID 1

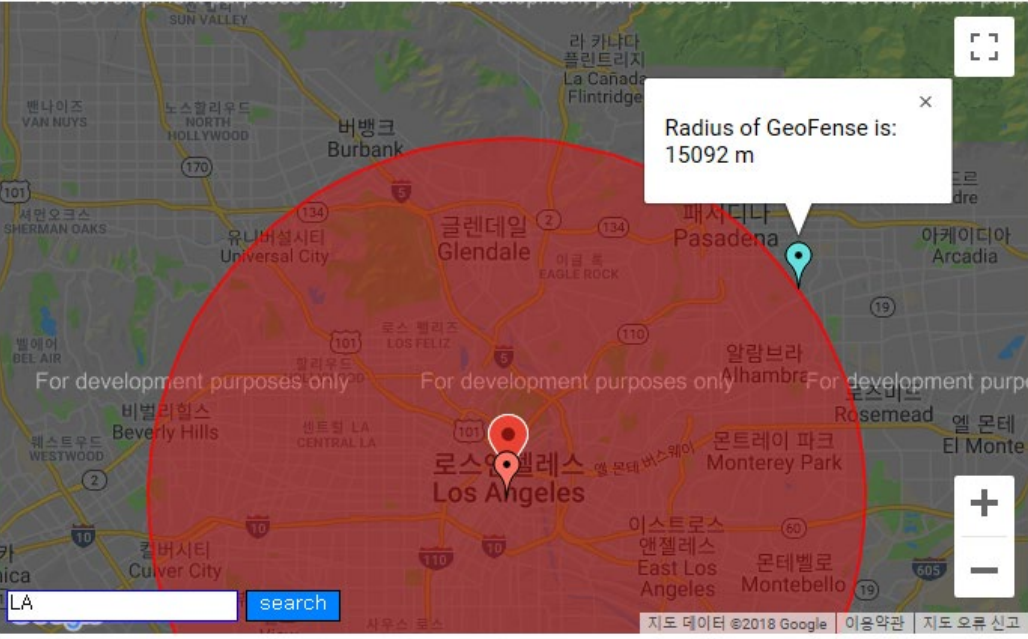
IN Enable

OUT Enable

NEXT CANCEL

Fig> First Step

Geofence Dialog



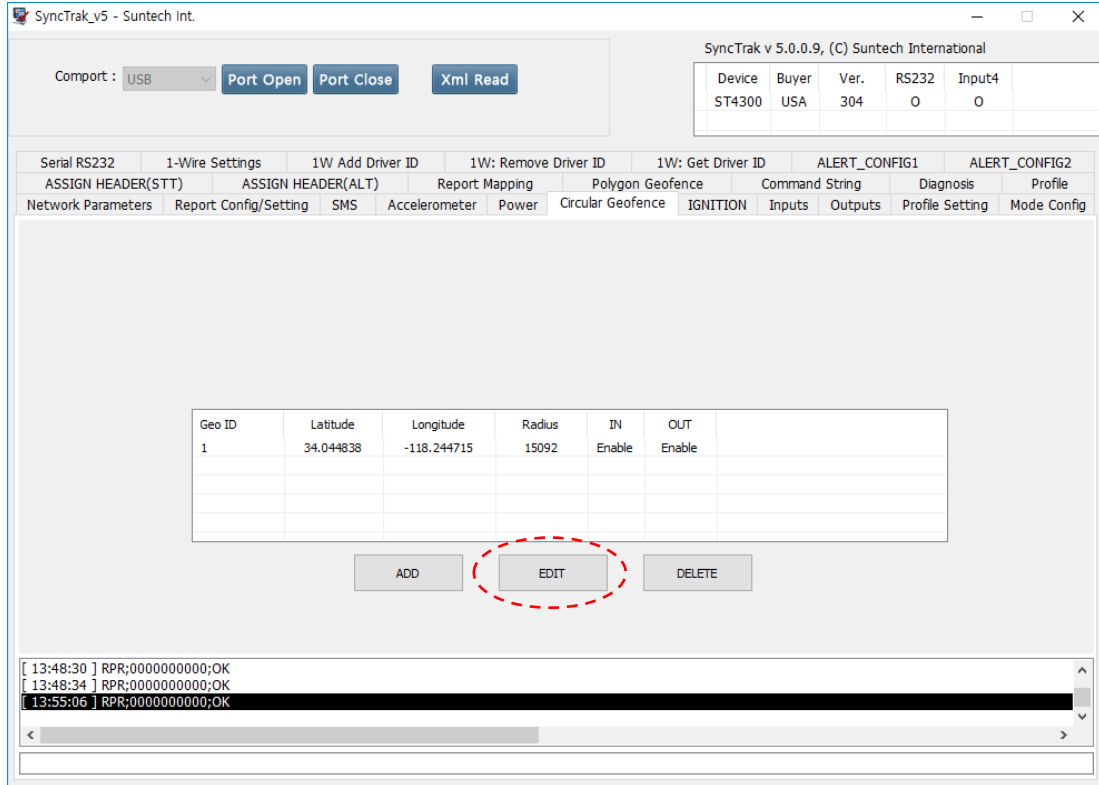
Radius of GeoFence is:
15092 m

PREVIOUS SEND CANCEL

Fig> Second Step

3-3-2. Edit Circular Geo-fence

Edit Circular Geo-fence is similar to ADD Circular Geo-fence function. Select item in list, click EDIT button and edit saved circular geo-fence.



SyncTrak v5 - Suntech Int.

SyncTrak v 5.0.0.9, (C) Suntech International

Comport : USB

Device	Buyer	Ver.	RS232	Input4
ST4300	USA	304	0	0

Serial RS232 1-Wire Settings 1W Add Driver ID 1W: Remove Driver ID 1W: Get Driver ID ALERT_CONFIG1 ALERT_CONFIG2

ASSIGN HEADER(STT) ASSIGN HEADER(ALT) Report Mapping Polygon Geofence Command String Diagnosis Profile

Network Parameters Report Config/Setting SMS Accelerometer Power Circular Geofence IGNITION Inputs Outputs Profile Setting Mode Config

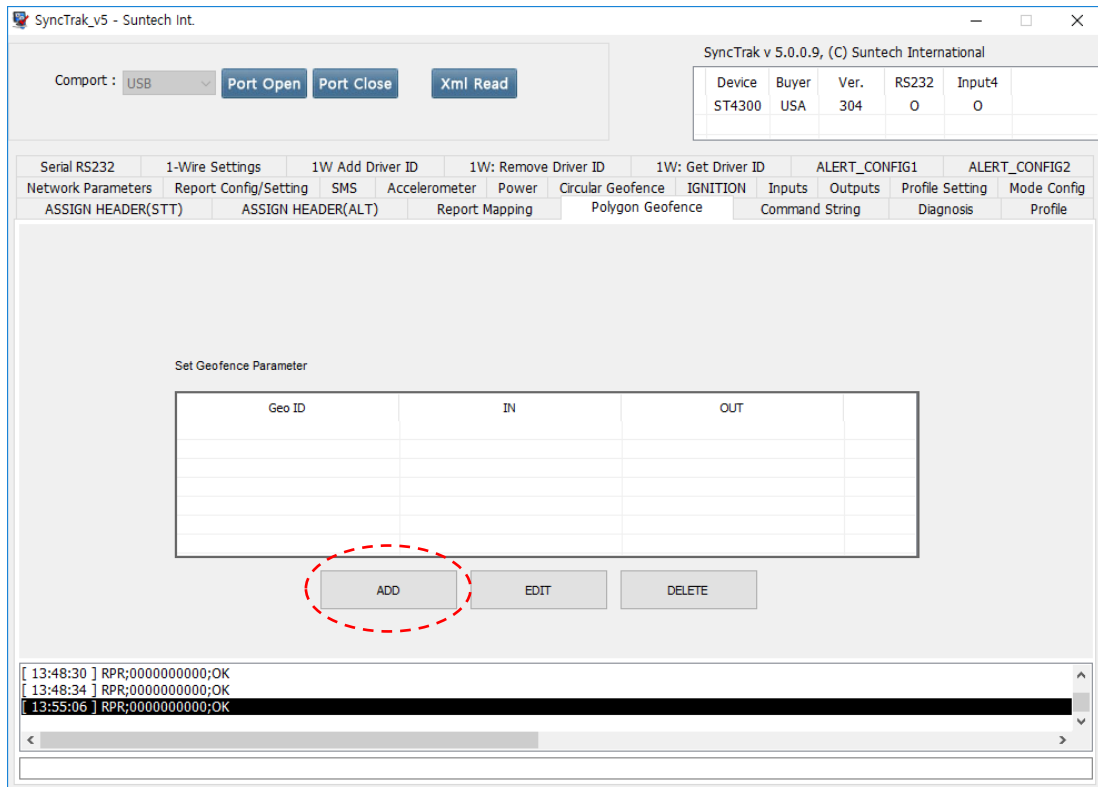
Geo ID	Latitude	Longitude	Radius	IN	OUT
1	34.044838	-118.244715	15092	Enable	Enable

[13:48:30] RPR;0000000000;OK
[13:48:34] RPR;0000000000;OK
[13:55:06] RPR;0000000000;OK

3-4. Polygon Geo-fence Setting

3-4-1. Add Polygon Geo-fence

If you would like to add new polygon geo-fence, you should use Add Polygon Geo-Fence function.(Click ADD button)



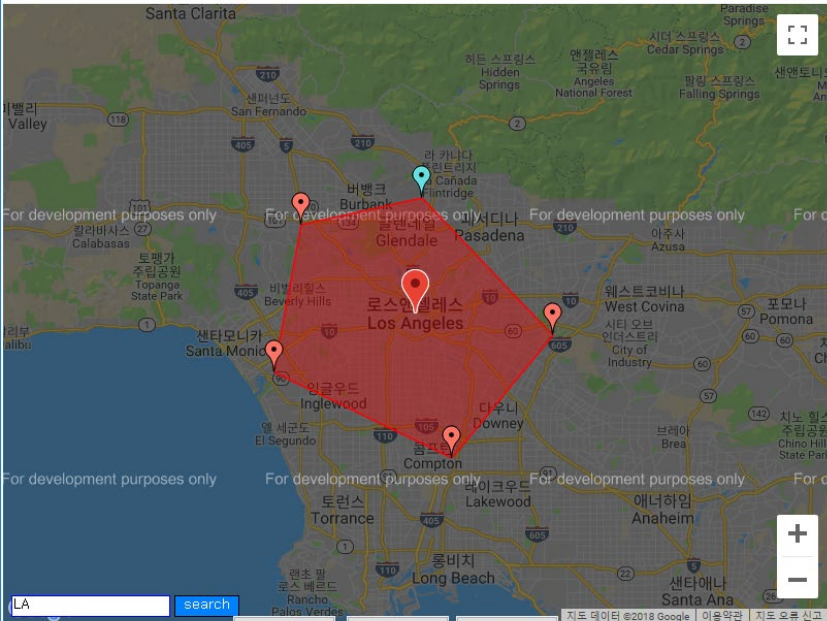
This function has two steps. First step is set geofence ID and IN, OUT options. After set parameters and clicked NEXT button, you can see the second step, set coordinate dialog. If you set all of parameters and click SEND button, you can set to complete to add new polygon geo-fence.

Group ID

IN

OUT

Fig> First Step

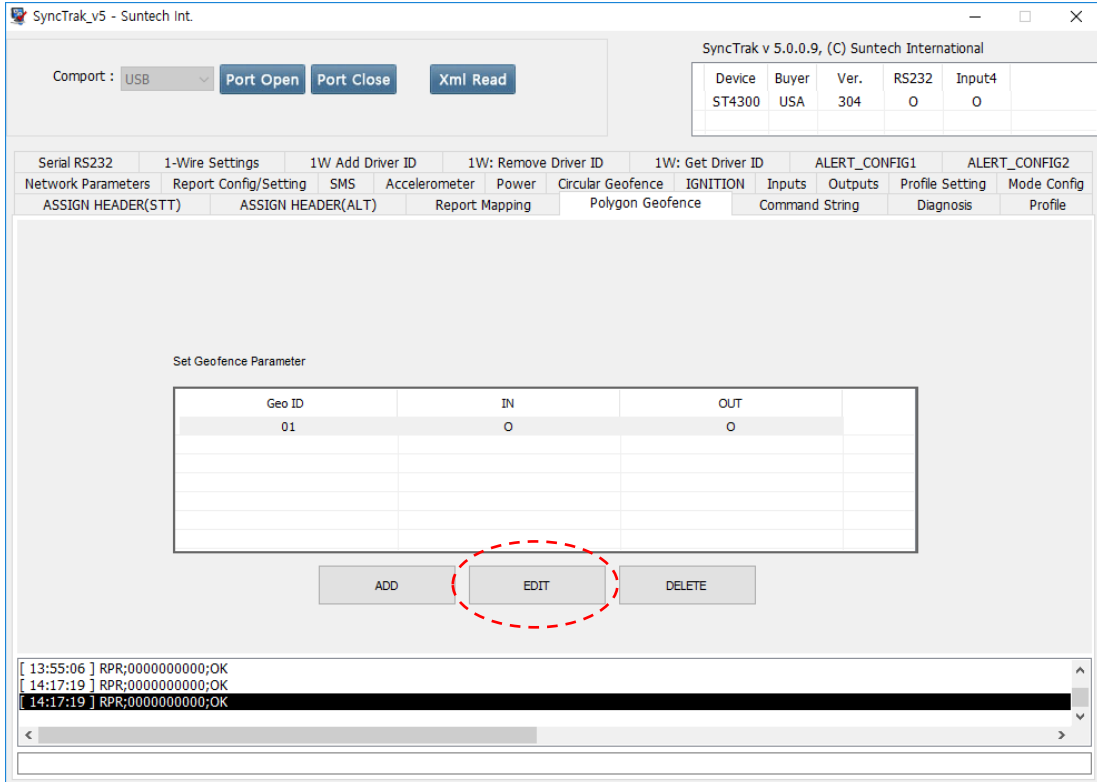


No	Long	Lat
1	-118.235445	34.179573
2	-118.061037	34.028337
3	-118.195620	33.892791
4	-118.431826	33.987354
5	-118.396120	34.150029

Fig> Second Step

3-4-2. Edit Polygon Geo-fence

Edit Polygon Geo-fence is similar to ADD Polygon Geo-fence function. Select item in list, click EDIT button and edit saved polygon geo-fence.



SyncTrak v5 - Suntech Int.

Comport : USB

SyncTrak v 5.0.0.9, (C) Suntech International

Device	Buyer	Ver.	RS232	Input4
ST4300	USA	304	0	0

Serial RS232 | 1-Wire Settings | 1W Add Driver ID | 1W: Remove Driver ID | 1W: Get Driver ID | ALERT_CONFIG1 | ALERT_CONFIG2
Network Parameters | Report Config/Setting | SMS | Accelerometer | Power | Circular Geofence | IGNITION | Inputs | Outputs | Profile Setting | Mode Config
ASSIGN HEADER(STT) | ASSIGN HEADER(ALT) | Report Mapping | Polygon Geofence | Command String | Diagnosis | Profile

Set Geofence Parameter

Geo ID	IN	OUT
01	0	0

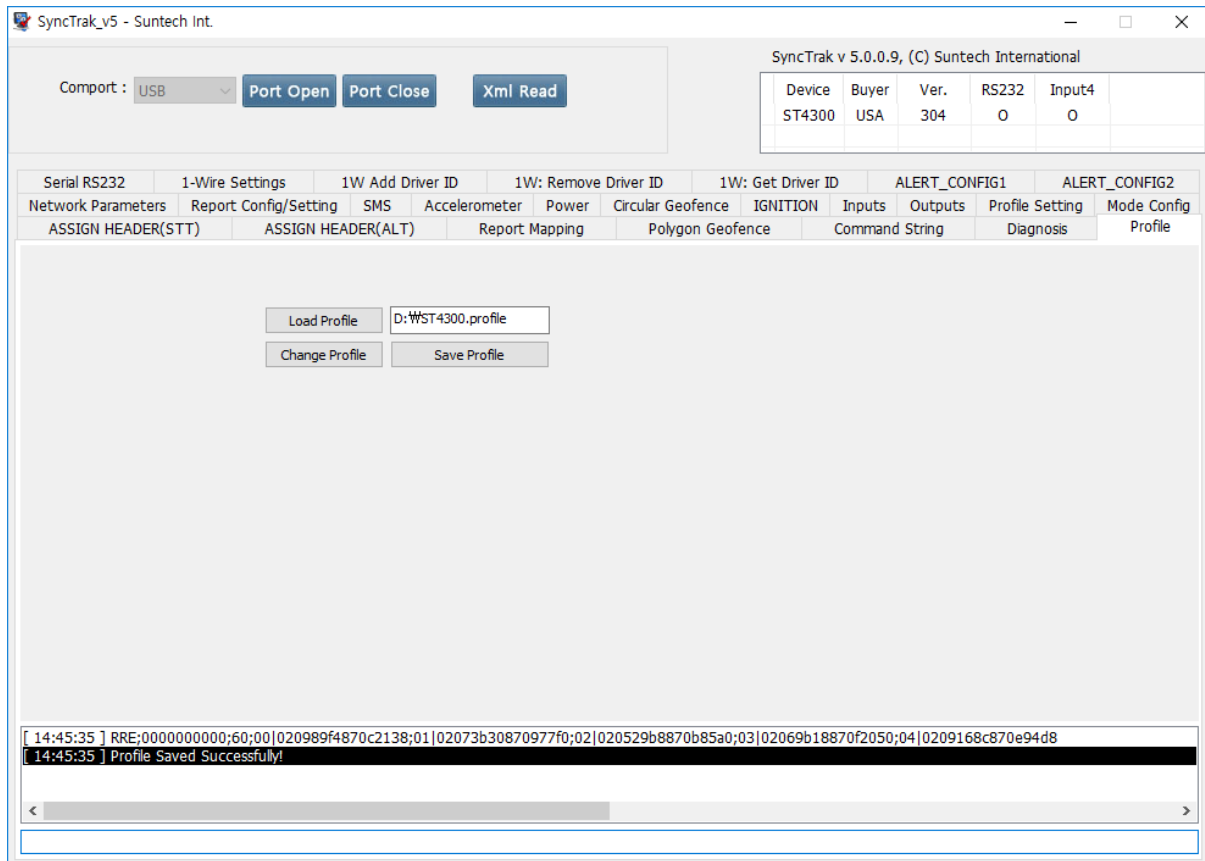
```
[ 13:55:06 ] RPR;0000000000;OK  
[ 14:17:19 ] RPR;0000000000;OK  
[ 14:17:19 ] RPR;0000000000;OK
```

3-5. Profile

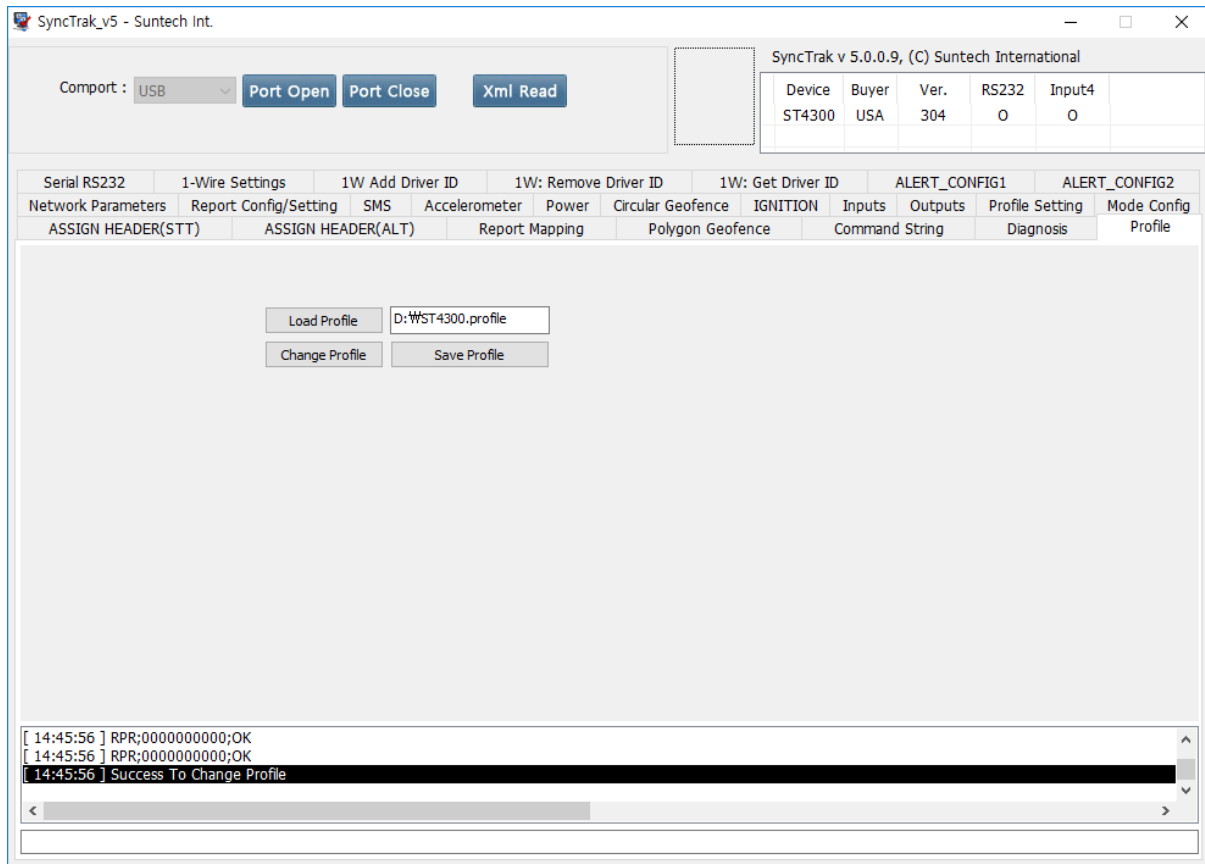
Click Load Profile button ().

If you do not have profile,  button.

It saves current settings as profile and load automatically.



Now click button, then all the parameters will change all at once.



The screenshot shows the SyncTrak v5 software interface. At the top, there are controls for 'Comport' (set to USB) and buttons for 'Port Open', 'Port Close', and 'Xml Read'. A table displays device information:

Device	Buyer	Ver.	RS232	Input4
ST4300	USA	304	0	0

Below the table is a menu with various settings categories: Serial RS232, 1-Wire Settings, 1W Add Driver ID, 1W: Remove Driver ID, 1W: Get Driver ID, ALERT_CONFIG1, ALERT_CONFIG2, Network Parameters, Report Config/Setting, SMS, Accelerometer, Power, Circular Geofence, IGNITION, Inputs, Outputs, Profile Setting, Mode Config, ASSIGN HEADER(STT), ASSIGN HEADER(ALT), Report Mapping, Polygon Geofence, Command String, Diagnosis, and Profile.

In the center, there are buttons for 'Load Profile' (with a dropdown menu showing 'D:\WST4300.profile'), 'Change Profile', and 'Save Profile'.

At the bottom, a log window shows the following messages:

```
[ 14:45:56 ] RPR:0000000000;OK
[ 14:45:56 ] RPR:0000000000;OK
[ 14:45:56 ] Success To Change Profile
```

	Doc. Title SyncTrak_v5 User Guide	Rev. 1.02	page of pages 16 of 16
---	--------------------------------------	--------------	---------------------------

REVISIONS

Rev.	Date	Change	Author
1.00	2014-02-04	Created	DY Jeong
1.01	2014-03-02	Revised index.	DY Jeong
1.02	2018-10-23	Modified the overall contents due to synctrak version update.	JH SIM